

EC800X_ ()
CAT1 EC800 layout

	1
1	4
1.1	4
2	“ ”	5
2.1	5
2.2	“ ”	5
2.3	6
2.4	6
2.5	6
3	“ ”	7
3.1	7
3.2	*	9
3.3	10
3.4	11
3.5	GNSS	11
3.6	WiFi_Scan	11
4	12
4.1	13
4.2	14
5	15
5.1	15
5.2	16
5.3	16
6	16

6.1	16
6.2	17
6.3	17
7	18
7.1	18
7.2	18
8	19
	19
	USB_BOOT.....	19
8.3	19
8.4	19
	20
	20

1

1.1

V1.0

V1.1

V1.2

V1.3

ADC

V1.4

R/PK

*

2

" "

2.1

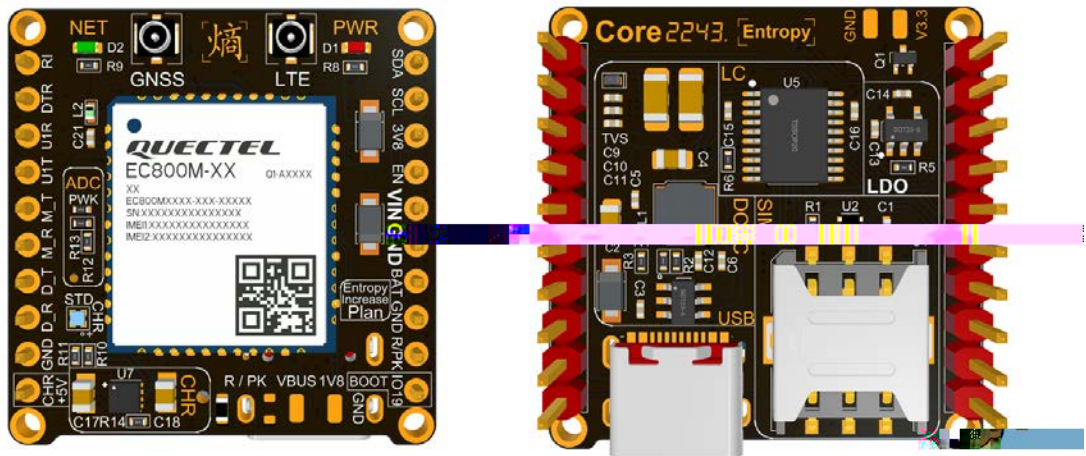
EC800X-CN M2M IoT LTE Cat 1
10 Mbps 5 Mbps
EC800X-CN LTE Standard EC800E-CN
EC800G-CN EC800N-CN

EC800X-CN

Windows 7/ 8/8.1/ 10/ 11 Linux Android

USB M2M IoT OTT
Tracker POS PDA

2.2



EC800X

2.3

2.4

2.5

1 30M/

3 " " *

EC800X

:800X

2.54mm

-pin

1

1

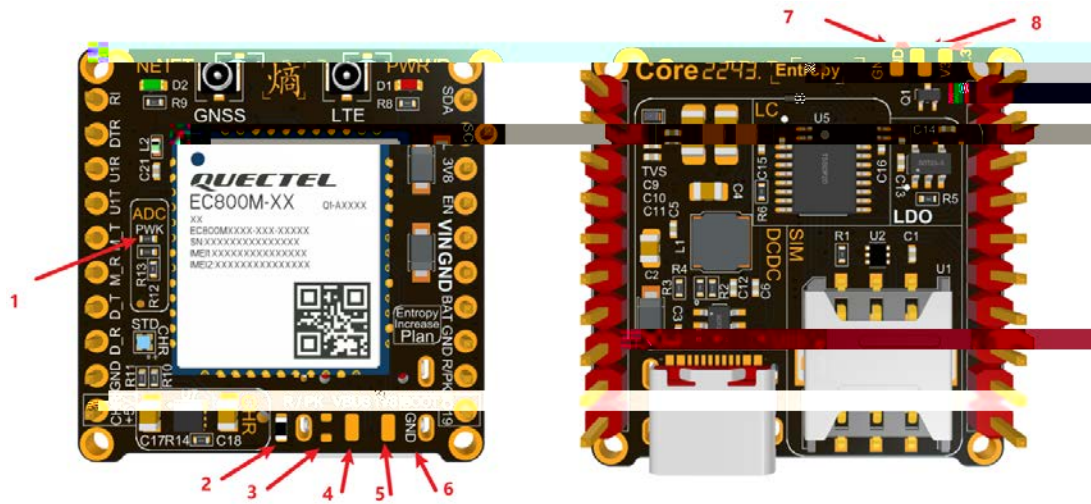
RI

MAIN_RI

8	D_R	DBG_RXD
9		

3.2

*

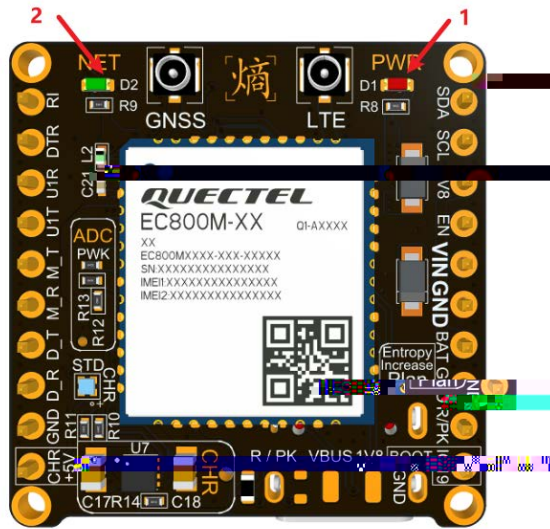


- 1 PWK: powerkey
- 2 RST: reset 0
- 3 PK: powerkey 0
- 4 VBUS: USB_VBUS
- 5 1V8: VDD_EXT
- 6 GND:
- 7 GND:
- 8 V3.3: LDO 3.3V

1 PWK 2 RST 0

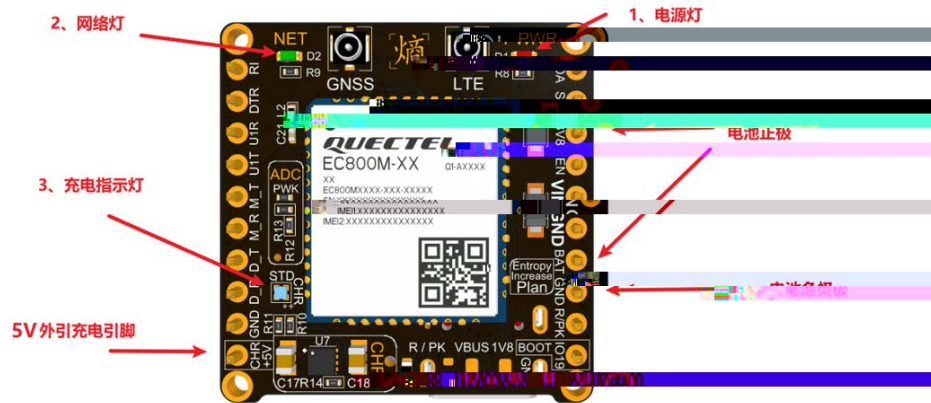
3 PK R/PK

3.3



1		1	2
2	1	2	
3	1	2	
4	1	2	
5		1	2
*		1	2

3.4



1				3V8	BAT
			GND		
2	1		Type-C	Type-C	CHR
	5V	1	3		
3	2		1	3	
*		3.7V	4.2V		
	4.2V				
		ADC			ADC
		ADC:VBAT=1:4			

3.5 GNSS

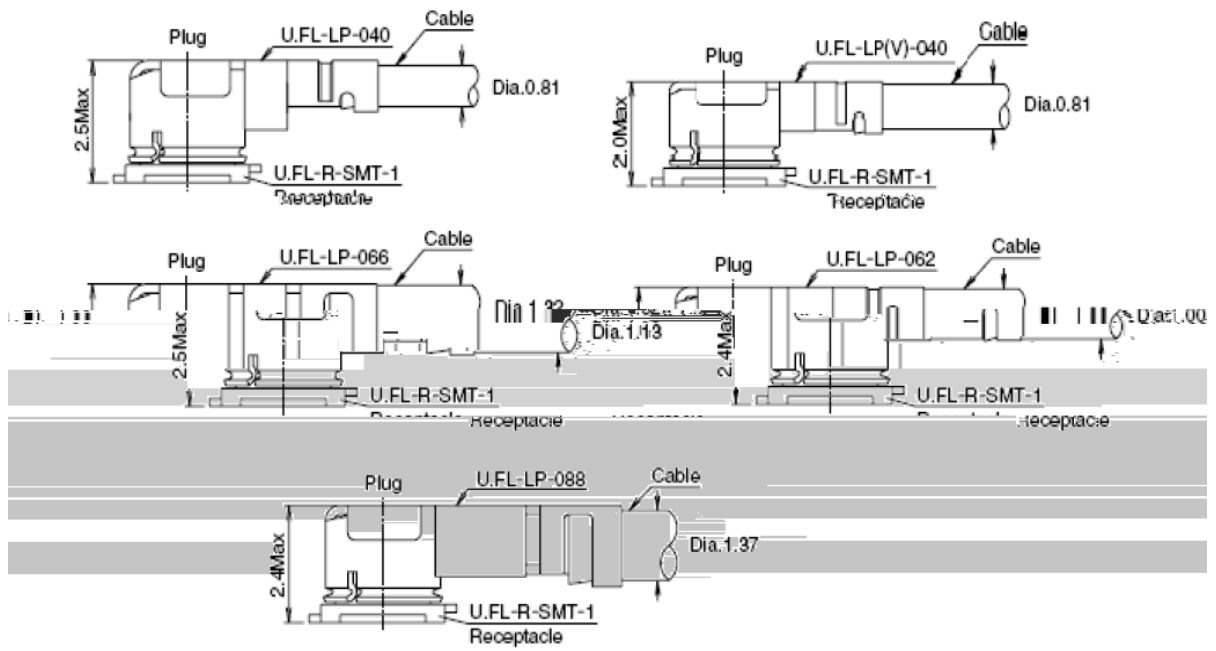
	EC800MCNGA	GNSS	IPEX
GNSS			

3.6 WiFi_Scan

WiFi_Scan	WiFi_Scan	LTE
-----------	-----------	-----

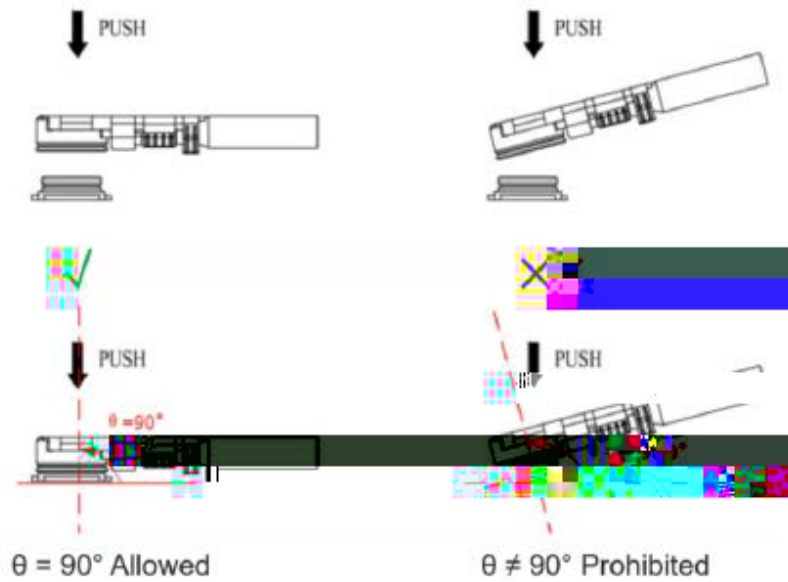
4

U.FL

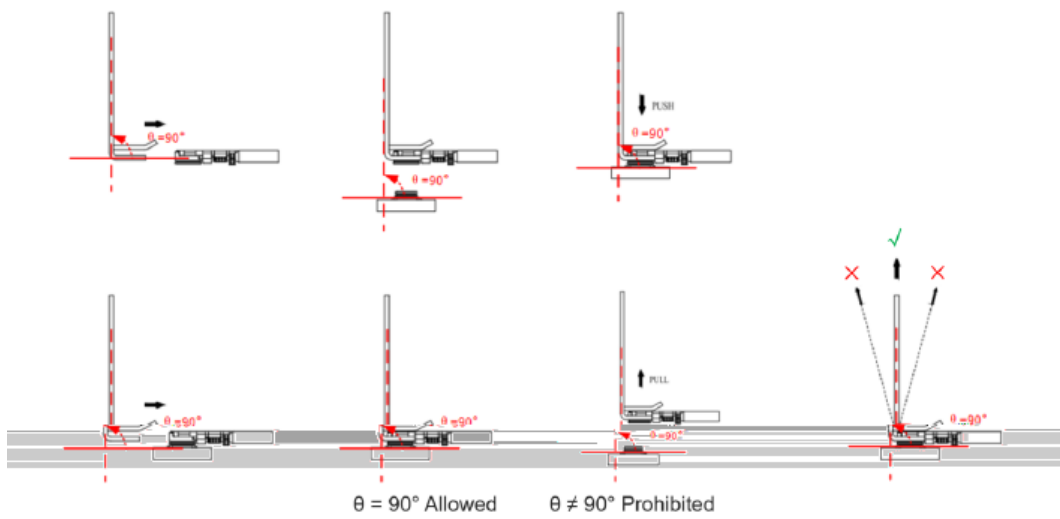


4.1

90



4.2



5

EC800X

5.1

EC800X

USB

USB_VIN	USB	4.6	5.0	5.1	V
---------	-----	-----	-----	-----	---

I/O

VIH		$0.7 \times VCC$	$VCC + 0.3$	V
VIL		-0.3	$0.3 \times VCC$	V
VOH		$VCC - 0.5$	VCC	V
VOL		0	0.4	V

* VCC 3.3V,

5.2

ESD

±5	±10	
±4	±8	kV
±0.5	±1	kV

5.3

-35	+25	+75	°C
-40		+80	°C
-40		+90	°C

* 1 3GPP
2

3GPP

3GPP

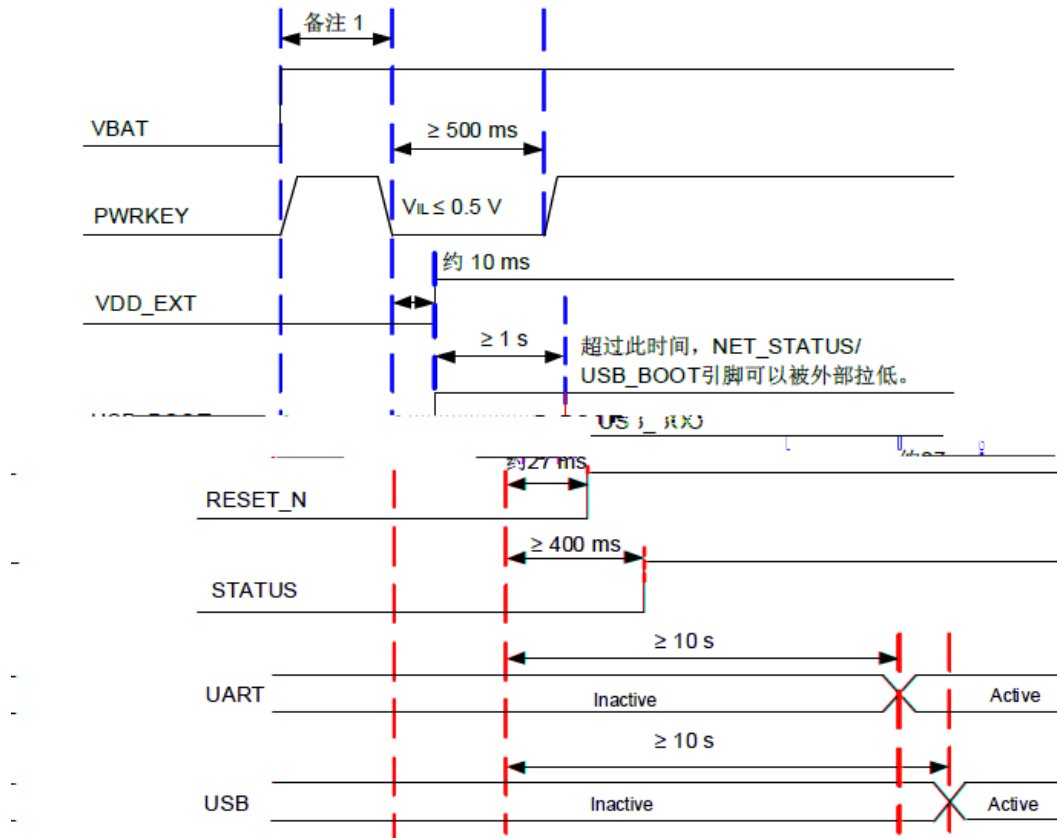
6

6.1

PCB

6.2

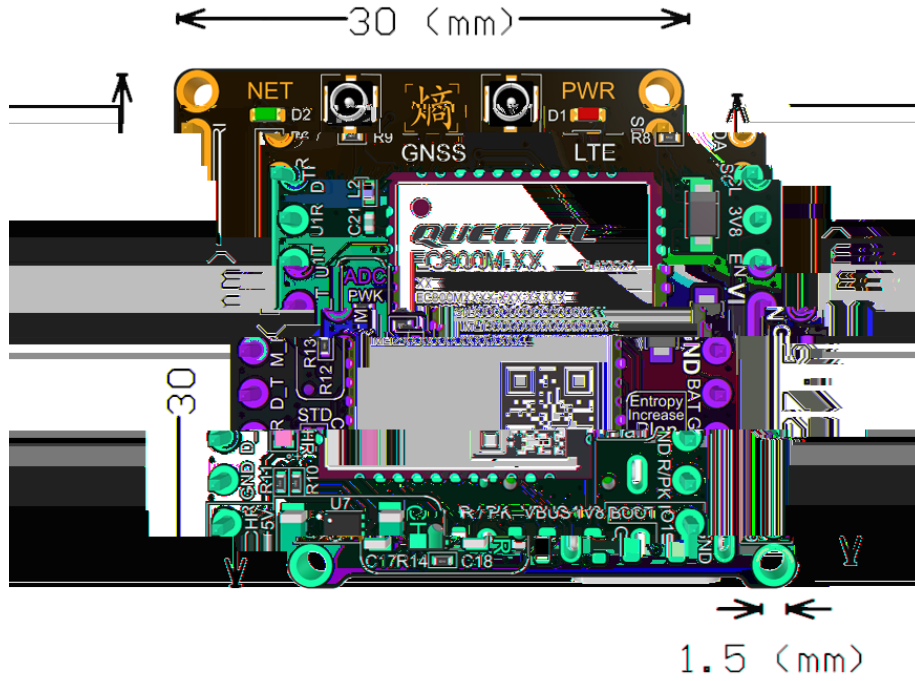
6.3



*

7

7.1



0.1mm

7.2

EC800X () FPC

8

8.1

EN

8.2 USB_BOOT

USB_BOOT (IO19)
IO19 AT AT+QDOWNLOAD=1
IO19

8.3

USB

USB

USB

8.4

3.7V

4.2V

4.2V

