



EC800X\_ ( )  
CAT1 EC800 layout

	.....	<b>1</b>
<b>1</b>	.....	<b>4</b>
1.1	.....	4
<b>2</b>	“ ” .....	<b>5</b>
2.1	.....	5
2.2	“ ” .....	5
2.3	.....	6
2.4	.....	6
2.5	.....	6
<b>3</b>	“ ” .....	<b>7</b>
3.1	.....	7
3.2	* .....	9
3.3	.....	10
3.4	.....	11
3.5	GNSS .....	11
3.6	WiFi_Scan .....	11
<b>4</b>	.....	<b>12</b>
4.1	.....	13
4.2	.....	14
<b>5</b>	.....	<b>15</b>
5.1	.....	15
5.2	.....	16
5.3	.....	16
<b>6</b>	.....	<b>16</b>

6.1	.....	16
6.2	.....	17
6.3	.....	17
<b>7</b>	.....	<b>18</b>
7.1	.....	18
7.2	.....	18
<b>8</b>	.....	<b>19</b>
8.1	.....	19
8.2	USB_BOOT.....	19
8.3	.....	19
8.4	.....	19
	.....	<b>20</b>
	.....	20

**1**

**1.1**

**V1.0**

**V1.1**

**V1.2**

**V1.3**

ADC

**V1.4**

R/PK

\*



**2.3**

**2.4**

**2.5**

1      30M/

**3**

\*

EC800X

EC800X

2.54mm

**3.1**

---

1

RI

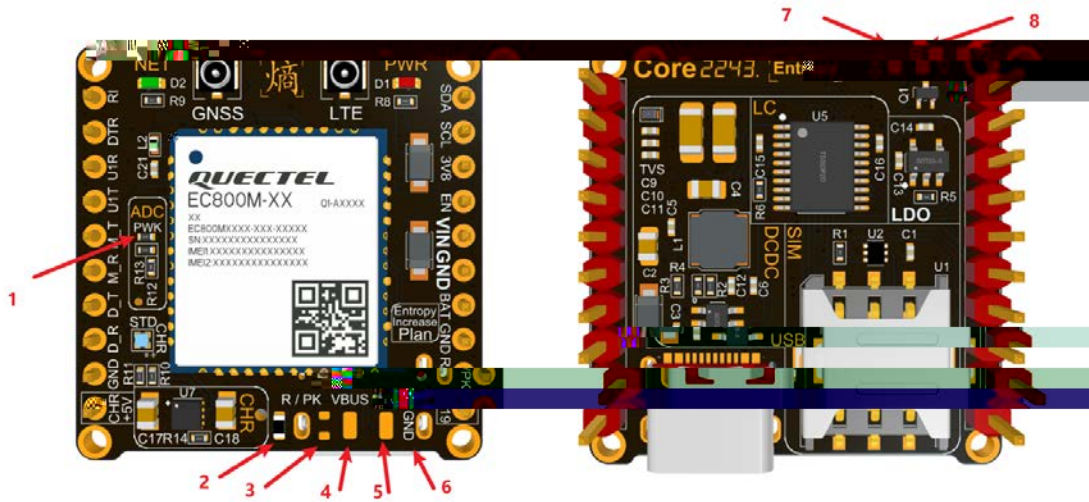
MAIN\_RI

---

8	D_R	DBG_RXD
9		

### 3.2

\*

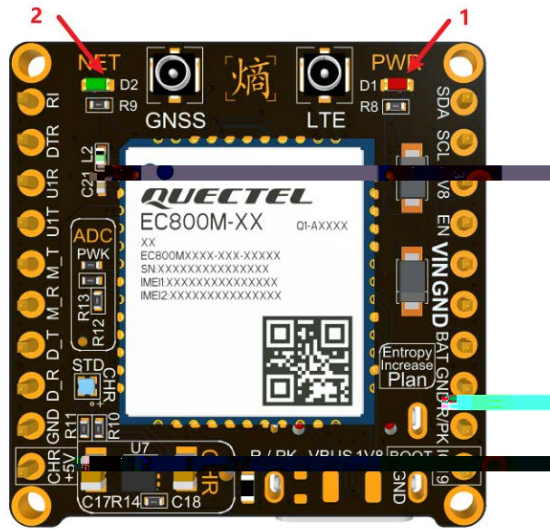


- 1 PWK: powerkey
- 2 RST: reset 0
- 3 PK: powerkey 0
- 4 VBUS: USB\_VBUS
- 5 1V8: VDD\_EXT
- 6 GND:
- 7 GND:
- 8 V3.3: LDO 3.3V

1 PWK 2 RST 0

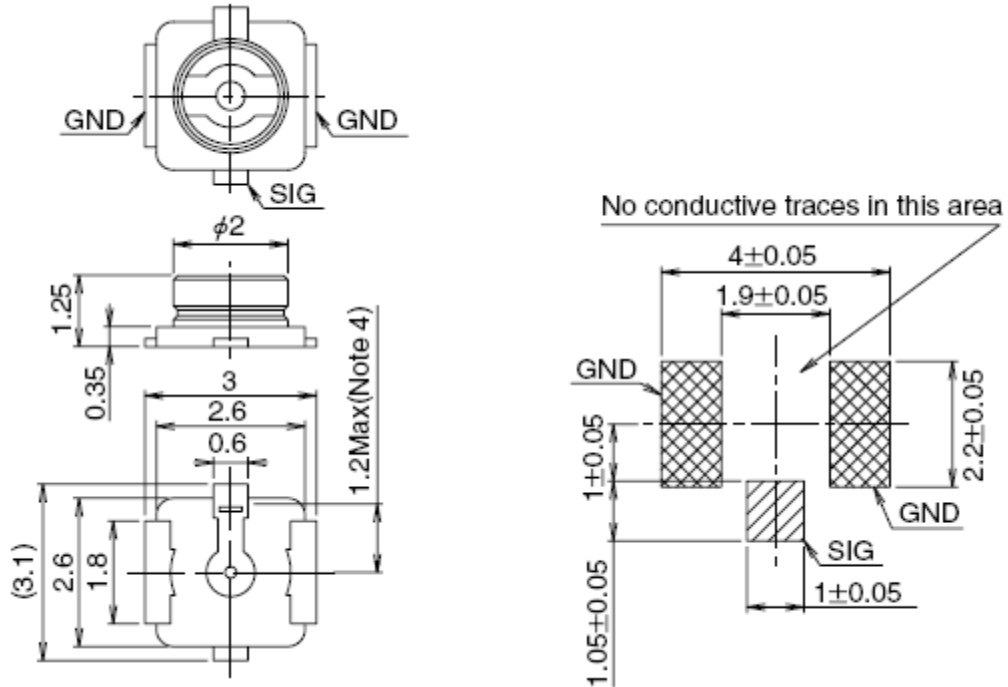
3 PK R/PK

### 3.3



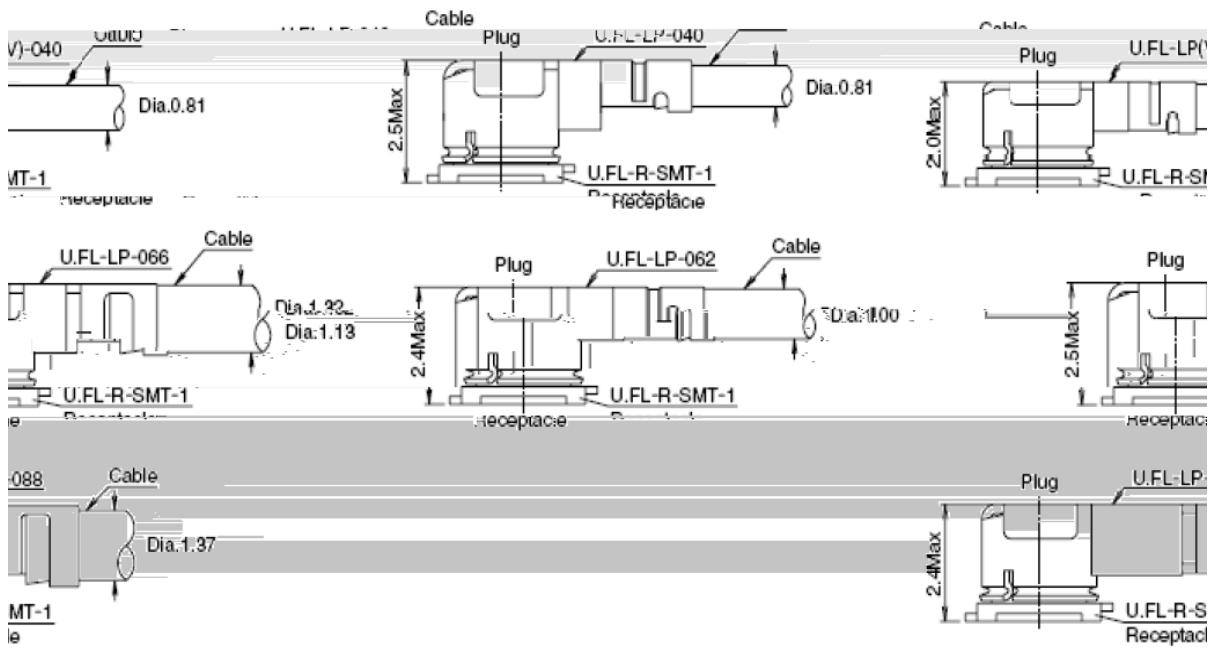
1		1	2
2	1	2	
3	1	2	
4	1	2	
5		1	2
*		1	2





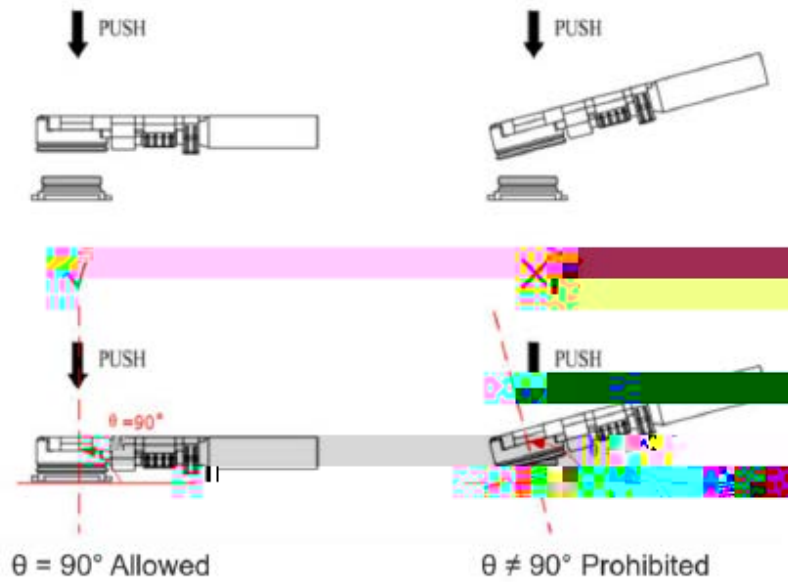
U.FL-LP

	U.FL-LP-040	U.FL-LP-066	U.FL-LP(V)-040	U.FL-LP-062	U.FL-LP-088
Part No.					
Mated Height	2.5mm Max. (2.4mm Nom.)	2.5mm Max. (2.4mm Nom.)	2.0mm Max. (1.9mm Nom.)	2.4mm Max. (2.3mm Nom.)	2.4mm Max. (2.3mm Nom.)
Applicable cable	Dia. 0.81mm Coaxial cable	Dia. 1.13mm and Dia. 1.32mm Coaxial cable	Dia. 0.81mm Coaxial cable	Dia. 1mm Coaxial cable	Dia. 1.37mm Coaxial cable
Weight (mg)	53.7	59.1	34.8	45.5	71.7
RoHS	YES				

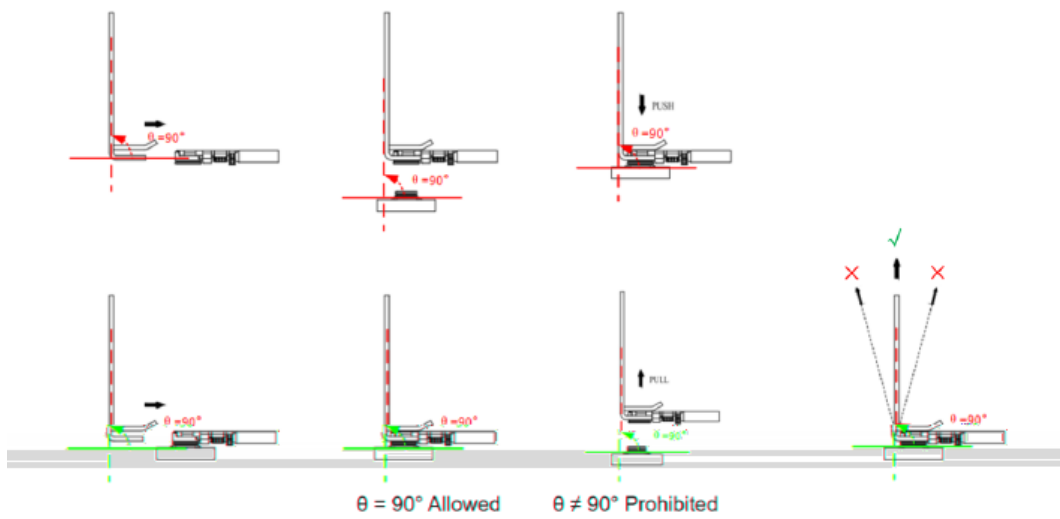


#### 4.1

90



4.2



# 5

## EC800X

### 5.1

EC800X

USB

---

USB_VIN	USB	4.6	5.0	5.1	V
---------	-----	-----	-----	-----	---

#### I/O

---

VIH		$0.7 \times VCC$	$VCC + 0.3$	V
VIL		-0.3	$0.3 \times VCC$	V
VOH		$VCC - 0.5$	VCC	V
VOL		0	0.4	V

---

\* VCC 3.3V,

## 5.2

### ESD

---

±5	±10	
±4	±8	kV
±0.5	±1	kV

## 5.3

---

-35	+25	+75	°C
-40		+80	°C
-40		+90	°C

\* 1 3GPP

2

3GPP

3GPP

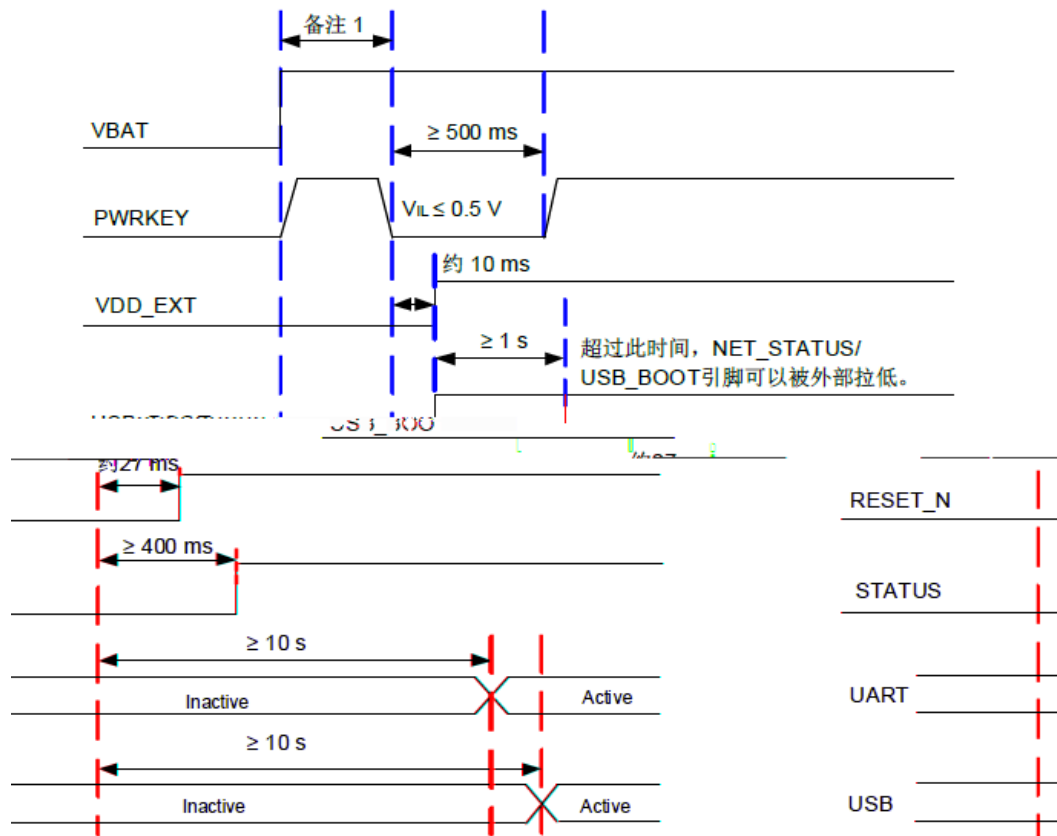
## 6

### 6.1

PCB

## 6.2

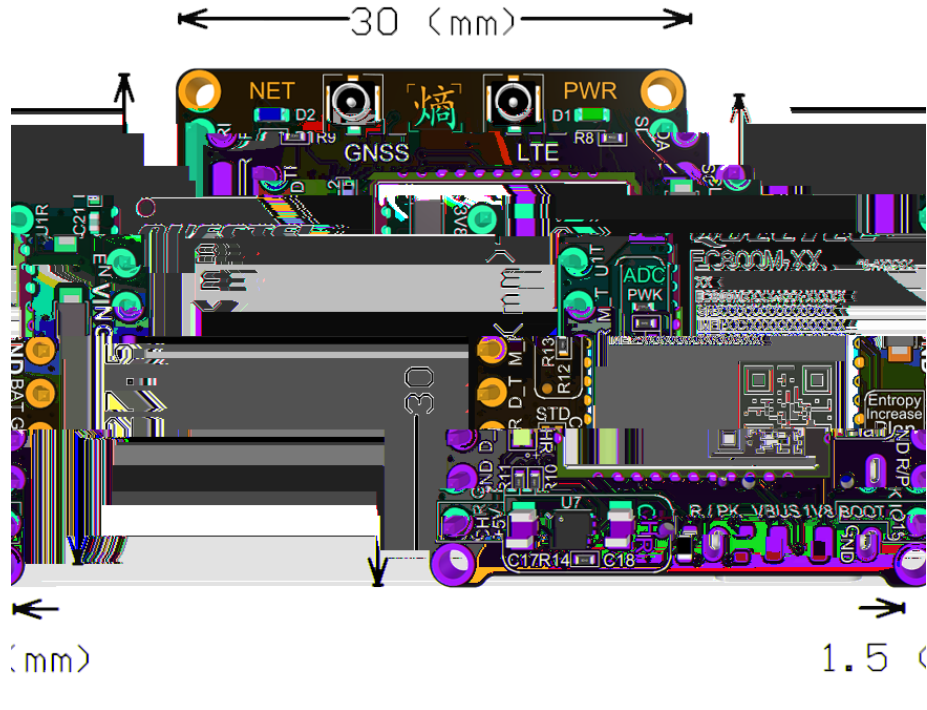
## 6.3



\*

7

7.1



0.1mm

7.2

EC800X ( ) FPC

# 8

EN

## USB\_BOOT

USB\_BOOT (IO19 )  
IO19 AT AT+QDOWNLOAD=1  
IO19

### 8.3

USB

USB

USB

### 8.4

3.7V

4.2V

4.2V

